



Electrolux
PROFESSIONAL

Premium Preparation 1800 mm Work Table with Upstand

ITEM # _____

MODEL # _____

NAME # _____

SIS # _____

AIA # _____



133058 (TG1810EN)

Work Table with 100mm
upstand, 1800mm

Short Form Specification

Item No. _____

The 50mm high worktop in 304 AISI stainless steel, 1,5mm in thickness, has anti-drip edges and welded corners. Under-top reinforcement bars in 304 AISI stainless steel. Integral rear upstand, h=100mm, with 10mm radius. Round section legs and feet in 304 AISI stainless steel, 50mm in diameter. Height-adjustable feet (+0-50mm).

Main Features

- The table can be ordered with the drawer of 400 mm or 600 mm (optional accessory): thanks to the design of the drawer, additional drawers can be added to the first single drawer to create chest of 2, 3 or 4 drawers based on customer's needs.
- Sturdiness, stability and reliability of table accurately tested.

Construction

- 100 mm upstand with 10 mm radiused corner and 13 mm deep, designed to be used against a wall.
- Worktop with 50 mm high profile, in s/s Scotch Brite finishing, 15/10 in thickness with anti-drip edges and welded corners.
- Round section legs with feet in 304 AISI stainless steel, 50 mm in diameter, adjustable in height by +0/-40 mm.
- Delivered in knock-down package.
- Wide range of taps are available to suit every need.
- Heavy duty construction entirely in AISI 304 stainless steel to offer maximum durability.

Optional Accessories

- Single drawer GN 1/1, 400mm PNC 855280 ☐
- Single drawer, 600mm PNC 855281 ☐
- Lower shelf for 1800mm for PNC 855285 ☐
units
- Set of 4 wheels (2 with brake) PNC 855288 ☐
d. 100mm
- 3-sided underframe for PNC 855293 ☐
1800mm tables
- Additional drawer, 600mm (to PNC 855295 ☐
set up a chest of 2, 3, 4
drawers)
- Additional drawer GN 1/1, PNC 855298 ☐
400mm (to set up a chest of 2,
3, 4 drawers)

APPROVAL: _____



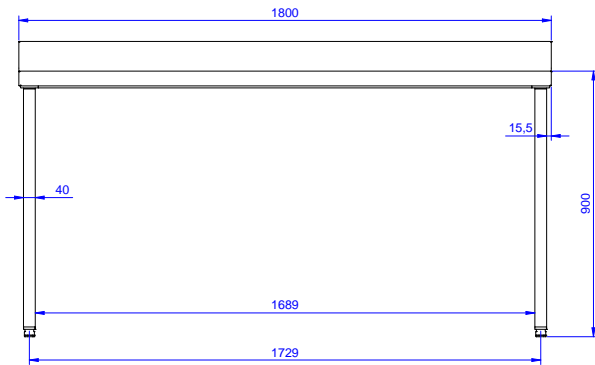
Experience the Excellence
www.electroluxprofessional.com



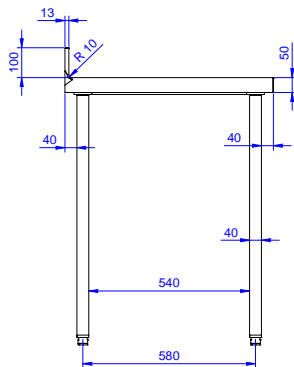
Electrolux
PROFESSIONAL

Premium Preparation 1800 mm Work Table with Upstand

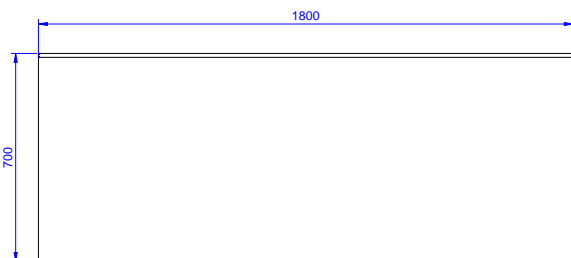
Front



Side



Top



Premium Preparation
1800 mm Work Table with Upstand

The company reserves the right to make modifications to the products without prior notice. All information correct at time of printing.

2025.05.15

Key Information:

Drawer combinations - No.
400 mm drawers

133058 (TG1810EN) 3

Drawer combinations -
No.600 mm drawers 2

Key Information - Drawer
combinations - 400 + 600
mm drawers 2+1

External dimensions,
Width: 1800 mm

External dimensions,
Depth: 700 mm

External dimensions,
Height: 900 mm

Upstand Dimensions,
Height: 100 mm

Upstand Dimensions,
Depth: 13 mm

Upstand Dimensions,
Radius: R=10

Worktop thickness: 50 mm

Net weight: 54 kg